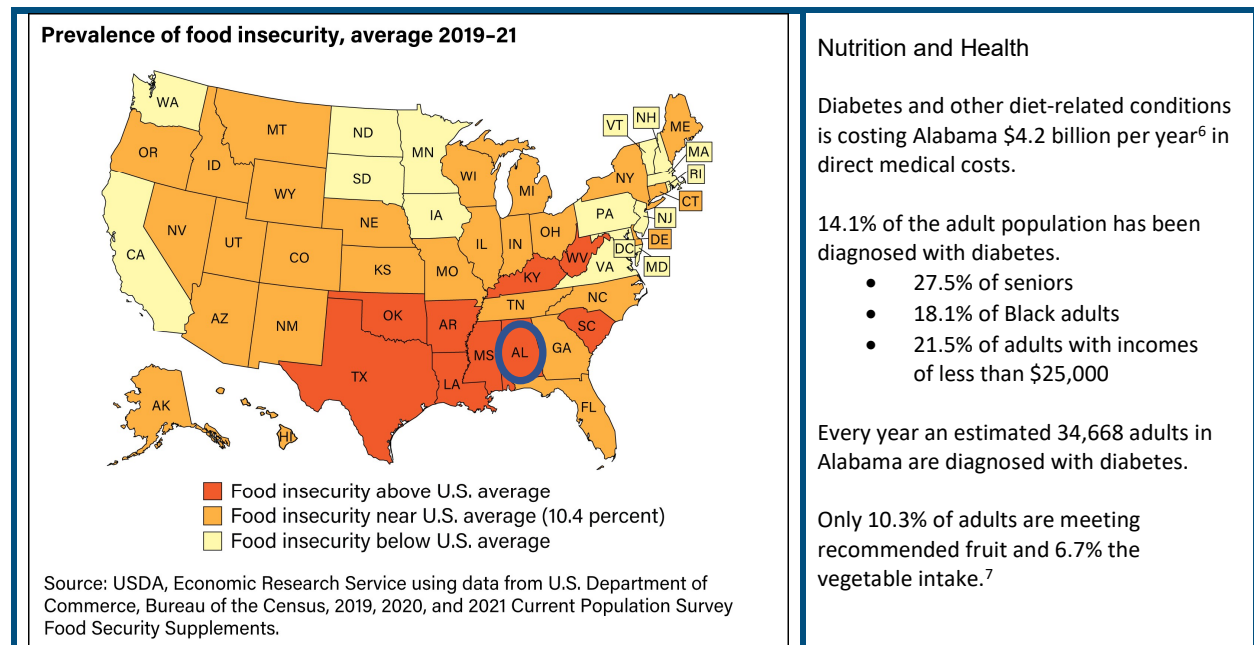


Alabama

A Hunger and Poverty Snapshot

Between 2019-2021:

- Food insecurity in Alabama averaged 13.1%.¹
- That makes Alabama the 7th hungriest state.²
- The official poverty rate (which does not account for post-tax programs such as SNAP, EITC, and others) in the state averaged 14.6%.³
- But using the Supplemental Poverty Measure (which does account for post-tax sources of income), the poverty rate falls to 10.3%.⁴ In other words, post-tax programs reduced the poverty rate in Alabama by 4.3 percentage points, and the number of people living in poverty decreased by 213,000.⁵



Why Bread for the World is Focused on the Farm Bill

The Farm bill is scheduled to be reauthorized in 2023. No legislation has more impact than a farm bill on the US food system and the nation’s ability to provide healthy food at affordable prices to everyone.

Bread for the World’s farm bill priorities include a focus on nutrition, equity, and sustainability. We believe Alabama has a lot to gain from a farm bill legislated with these priorities in mind.

Nutrition	Equity	Sustainability
<p>Bread for the World supports strengthening SNAP in Alabama.</p> <p>Not only is SNAP the flagship food security and nutrition program, it is indispensable to better health outcomes and economic prosperity.</p> <p>In 2021, 15% of Alabama residents were helped by SNAP.⁸</p> <ul style="list-style-type: none"> • Roughly 222,800 workers in Alabama live in households that participated in SNAP in 2021.⁹ • SNAP helps 1 in 9 workers in Alabama put food on the table.¹⁰ • 72% of SNAP participants were in families with children, and 38% in families with members who are older adults or are disabled.¹¹ • 79% of all SNAP-eligible people in Alabama participate in the program.¹² 	<p>Bread for the World supports farm policies that promote a more equitable food system in Alabama.</p> <p>The Alabama population is 62% white. According to the most recent Census of Agriculture, 91% of farmers and ranchers in Alabama are white and occupy 96% of all farmland.¹³</p> <ul style="list-style-type: none"> • Black farmers and ranchers represent 6% and occupy 4% of farmland. • Hispanic farmers and ranchers represent 1% and occupy >1% of farmland. • Indigenous producers represent 2% and occupy 2% of farmland. 	<p>Bread for the World is committed to eradicating food insecurity by building a more sustainable food system in Alabama.</p> <p>Reducing unnecessary food waste is one way to build a more sustainable food system.</p> <p>In 2019, 872,000 tons¹⁴ of surplus food in Alabama went to waste instead of reaching those who needed it, an amount equal to:</p> <ul style="list-style-type: none"> • 1.4 billion meals unsold or uneaten.¹⁵ • \$5.62 billion in lost sales.¹⁶ • 4.04 million metric tons of CO2 equivalent emissions contributing to climate change.¹⁷

Footnotes

¹ <https://www.ers.usda.gov/webdocs/publications/104656/err-309.pdf?v=9924.5>

² Bread for the World, based on USDA reporting, See Note 1.

³ <https://www.census.gov/content/dam/Census/library/publications/2022/demo/p60-277.pdf>

⁴ <https://www.census.gov/content/dam/Census/library/publications/2022/demo/p60-277.pdf>

⁵ <https://www.census.gov/content/dam/Census/library/publications/2022/demo/p60-277.pdf>

⁶ <https://www.americashealthrankings.org/explore/annual/measure/Diabetes/state>

⁷ https://www.cdc.gov/mmwr/volumes/71/wr/mm7101a1.htm?s_cid=mm7101a1_w#T1_down

⁸ <https://www.cbpp.org/research/food-assistance/a-closer-look-at-who-benefits-from-snap-state-by-state-fact-sheets#Alabama>

⁹ <https://www.cbpp.org/snap-helps-low-wage-workers-in-every-state#Alabama>

¹⁰ <https://www.cbpp.org/snap-helps-low-wage-workers-in-every-state#Alabama>

¹¹ <https://www.cbpp.org/research/food-assistance/a-closer-look-at-who-benefits-from-snap-state-by-state-fact-sheets#Alabama>

¹² <https://www.fns.usda.gov/usamap>

¹³ https://www.nass.usda.gov/Publications/AgCensus/2017/Online_Resources/County_Profiles/Alabama/index.php

¹⁴ https://insights-engine.refed.org/food-waste-monitor?break_by=food_type&indicator=tons-surplus&view=detail&year=2019

¹⁵ https://insights-engine.refed.org/food-waste-monitor?break_by=food_type&indicator=tons-surplus&view=detail&year=2019

¹⁶ https://insights-engine.refed.org/food-waste-monitor?break_by=food_type&indicator=tons-surplus&view=detail&year=2019

¹⁷ https://insights-engine.refed.org/food-waste-monitor?break_by=food_type&indicator=tons-surplus&view=detail&year=2019