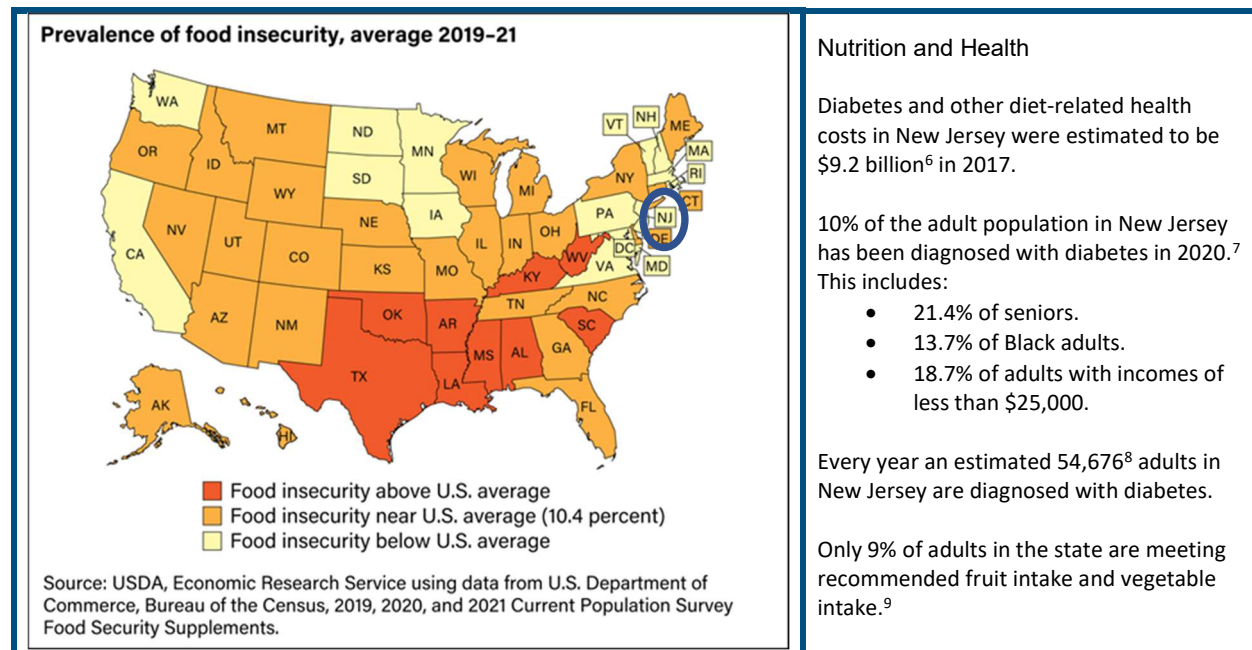


New Jersey

A Hunger and Poverty Snapshot

Between 2019-2021:

- Food insecurity in New Jersey averaged 8.3%.¹
- New Jersey's food insecurity rate was 20% lower than the national average of 10.4%.²
- The poverty rate in New Jersey in 2021 (using the Supplemental Poverty Measure) was 8.1%, which was 0.3 percentage points higher than the national average of 7.8%.³
- New Jersey's poverty rate is high compared to the rest of the nation in large part because of the high cost of housing. Four in 10 low-income people in New Jersey are homeless or pay over half their income for rent.⁴
- SNAP, alone, lifted 155,000 people above the poverty line in New Jersey, including 70,000 children, per year between 2013 and 2017, on average.⁵



Why Bread for the World is Focused on the Farm Bill

The Farm bill is scheduled to be reauthorized in 2023. No legislation has more impact than a farm bill on the US food system and the nation's ability to provide healthy food at affordable prices to everyone.

Bread for the World's farm bill priorities include a focus on nutrition, equity, and sustainability. We believe New Jersey has a lot to gain from a farm bill legislated with these priorities in mind.

| Nutrition | Equity | Sustainability |
|--|---|--|
| <p>Bread for the World supports strengthening SNAP in New Jersey.</p> <p>Not only is SNAP the flagship food security and nutrition program, it is indispensable to better health outcomes and economic prosperity.</p> <p>In 2021, 9% of New Jersey residents were helped by SNAP.¹⁰</p> <ul style="list-style-type: none"> • Roughly 288,000 workers in New Jersey live in households that participated in SNAP in 2021.¹¹ • SNAP helps 1 in 15 workers in New Jersey put food on the table.¹² • 64% of SNAP participants were in families with children, and 47% in families with members who are older adults or are disabled.¹³ • 82% of all SNAP-eligible people in New Jersey participate in the program.¹⁴ | <p>Bread for the World supports farm policies that promote a more equitable food system in New Jersey.</p> <p>The New Jersey population is 53.5% white. According to the most recent Census of Agriculture, 94% of farmers and ranchers (producers) in New Jersey are white and occupy 96% of all farmland.¹⁵</p> <ul style="list-style-type: none"> • Black producers represent <1% and occupy <1% of farmland. • Hispanic producers represent 3% and occupy 2% of farmland. • Asian producers represent 1% and occupy 2% of farmland. • Indigenous producers represent <1% and occupy <1% of farmland. | <p>Bread for the World is committed to eradicating food insecurity by building a more sustainable food system in New Jersey.</p> <p>Reducing unnecessary food waste is one way to build a more sustainable food system.</p> <p>In 2019, 1.64 million tons¹⁶ of surplus food in New Jersey went to waste instead of reaching those who needed it, an amount equal to:</p> <ul style="list-style-type: none"> • 2.62 billion meals unsold or uneaten.¹⁷ • \$10.6 billion in lost sales.¹⁸ • Annual CO2 emissions produced by 1,407,014 gasoline-powered cars.^{19, 20} |

Footnotes

¹ <https://www.ers.usda.gov/webdocs/publications/104656/err-309.pdf?v=9924.5>

² Bread for the World, based on USDA reporting, See Note 1.

³ <https://www.census.gov/content/dam/Census/library/publications/2022/demo/p60-277.pdf>

⁴ <https://www.cbpp.org/research/housing/federal-rental-assistance-fact-sheets#NJ>

⁵ https://www.cbpp.org/research/food-assistance/a-closer-look-at-who-benefits-from-snap-state-by-state-fact-sheets#New_Jersey

⁶ <https://diabetes.org/about-us/statistics/by-state>

⁷ <https://www.americashealthrankings.org/explore/annual/measure/Diabetes/state/NJ>

⁸ <https://diabetes.org/about-us/statistics/by-state>

⁹ <https://www.americashealthrankings.org/explore/annual/measure/fvcombo/state/NJ>

¹⁰ https://www.cbpp.org/research/food-assistance/a-closer-look-at-who-benefits-from-snap-state-by-state-fact-sheets#New_Jersey

¹¹ https://www.cbpp.org/snap-helps-low-wage-workers-in-every-state#New_Jersey

¹² https://www.cbpp.org/snap-helps-low-wage-workers-in-every-state#New_Jersey

¹³ https://www.cbpp.org/research/food-assistance/a-closer-look-at-who-benefits-from-snap-state-by-state-fact-sheets#New_Jersey

¹⁴ <https://www.fns.usda.gov/usamap>

¹⁵ https://www.nass.usda.gov/Publications/AgCensus/2017/Full_Report/Census_by_State/New_Jersey/

¹⁶ https://insights-engine.refed.org/food-waste-monitor?break_by=food_type&indicator=tons-surplus&view=detail&year=2019

¹⁷ https://insights-engine.refed.org/food-waste-monitor?break_by=food_type&indicator=tons-surplus&view=detail&year=2019

¹⁸ https://insights-engine.refed.org/food-waste-monitor?break_by=food_type&indicator=tons-surplus&view=detail&year=2019

¹⁹ https://insights-engine.refed.org/food-waste-monitor?break_by=food_type&indicator=tons-surplus&view=detail&year=2019

²⁰ <https://www.epa.gov/energy/greenhouse-gas-equivalencies-calculator>